

ENHANCED METAL FLANGE PROCESS REEL (EMF)

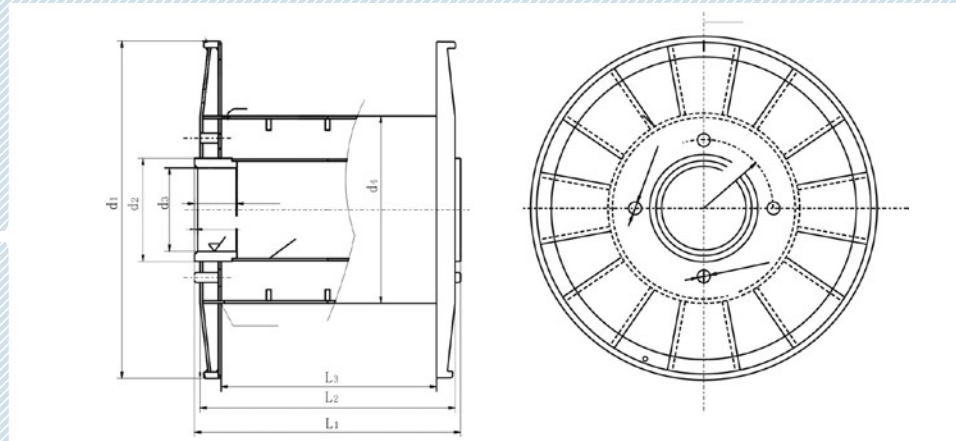
EMF630 - 1250

A stronger pressed steel process, one-way or shipping reel. It is suitable for heavier cable, steel wire or rope, copper aluminum and welding wire. Dimensions may be according to customer's specifications or the relevant international industry standards.



EMF DIMENSIONS

- > **d1** FLANGE DIAMETER
- > **d2** BARREL DIAMETER
- > **d3** BOSS DIAMETER
- > **d4** BORE DIAMETER
- > **d5** DRIVE PIN DIAMETER
- > **L1** OVERALL WIDTH
- > **L2** TRAVERSE
- > **e** DRIVE RADIUS



TYPE	d1	d2	d3	L1	L2
SPECIFICATION					
630	630	350	+1.00 80 +0.50	444	400
760	760	408	+1.00 80 +0.50	410	360
860	860	430	+1.00 80 +0.50	430	380
1150	1150	780	+1.00 80 +0.50	318	255
1250	1250	630	80	950	800