

# SEMI MACHINED (SM)

DYNAMICALLY BALANCED TO ISO9001:2000

---

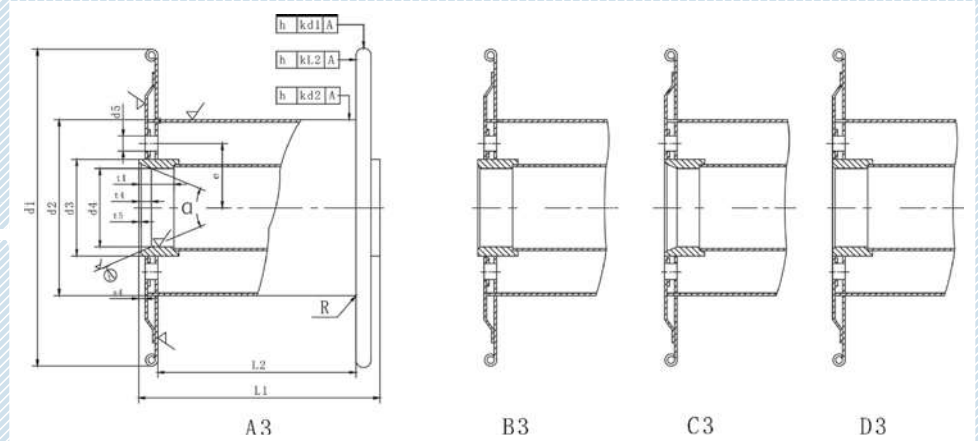
SM315 - 1250

These reels have pressed steel flanges and are suitable for drawing, stranding and bunching of cable and all types of wire. They are dynamically balanced for speeds from 20m/s to 50m/ s. The reel dimensions are according to client specification or international industry standards.



## SM DIMENSIONS

- > **d1** FLANGE DIAMETER
- > **d2** BARREL DIAMETER
- > **d3** BOSS DIAMETER
- > **d4** BORE DIAMETER
- > **d5** DRIVE PIN DIAMETER
- > **L1** OVERALL WIDTH
- > **L2** TRAVERSE
- > **e** DRIVE RADIUS



TYPE SPECIFICATION	d1	d2	d3	d4	L1	L2	d5	e	t1	t4	t5	v1 dm <sup>3</sup>
	315	315	180 200 224	160	125/127	236	200	16	100	63	20	
355	355	200 224 250	160	125/127	265	224	9.3					
							7.7					
400	400	224 250 280	160	125/127	300	250	12.2					
							15.1					
450	450	250 280 315	160	125/127	335	280	13.3					
							11.2					
500	500	280 315 355	160	125/127	375	315	28	100	63	20	2	17.3
												21.6
560	560	315 355 400	160	125/127	425	355	28	100	63	20	2	19.1
												16.0
630	630	315 355 400 450	160	125/127	475	400	28	100	63	20	2	24.6
												30.8
710	710	400 450 500	300	250	530	450	40	170	125	40	2.5	27.3
												22.7
800	800	450 500 560 560	300	250	600	500	40	170	125	40	2.5	33.7
												42.5
1000	1000	630 710	300	250	750	630	50	250	125	40	2.5	37.5
												30.7
1250	1250	710 800 900	300	250	950	800	50	250	125	40	2.5	47.1
												59.8
												52.3
												42.8
												67.0
												86.2
												74.4
												61.6
												95.9
												121.6
												106.6
												89.8
												137
												172
												153
												128
												340
												298
												245
												665
												580
												473